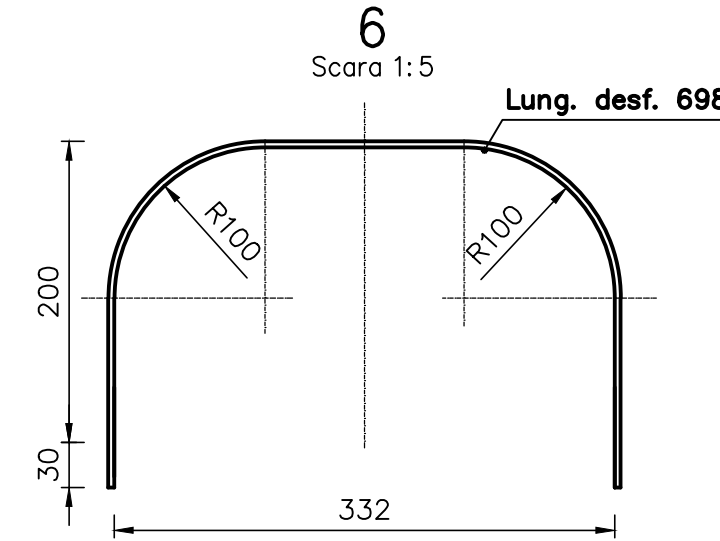
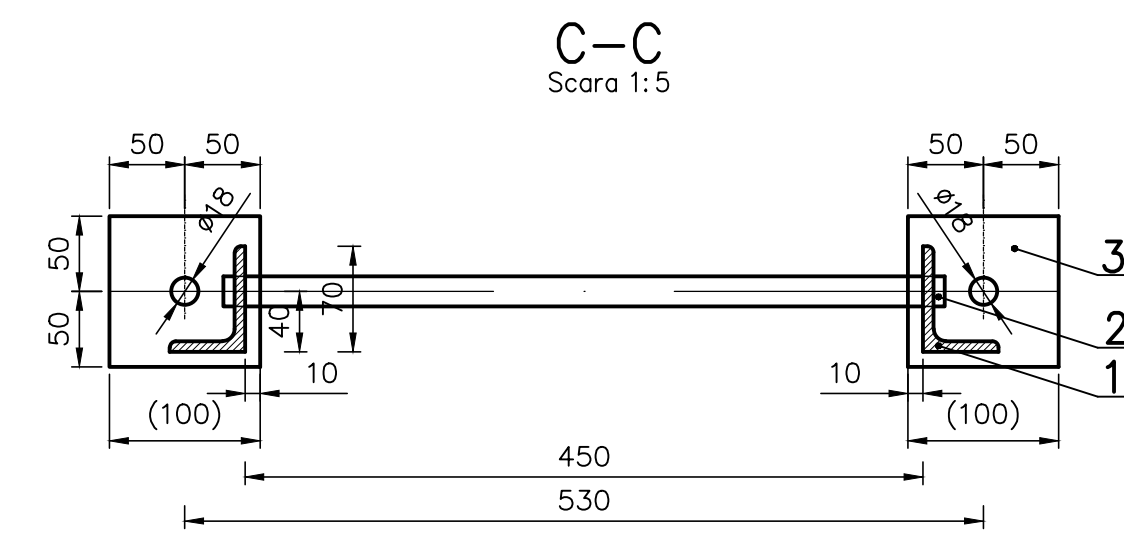
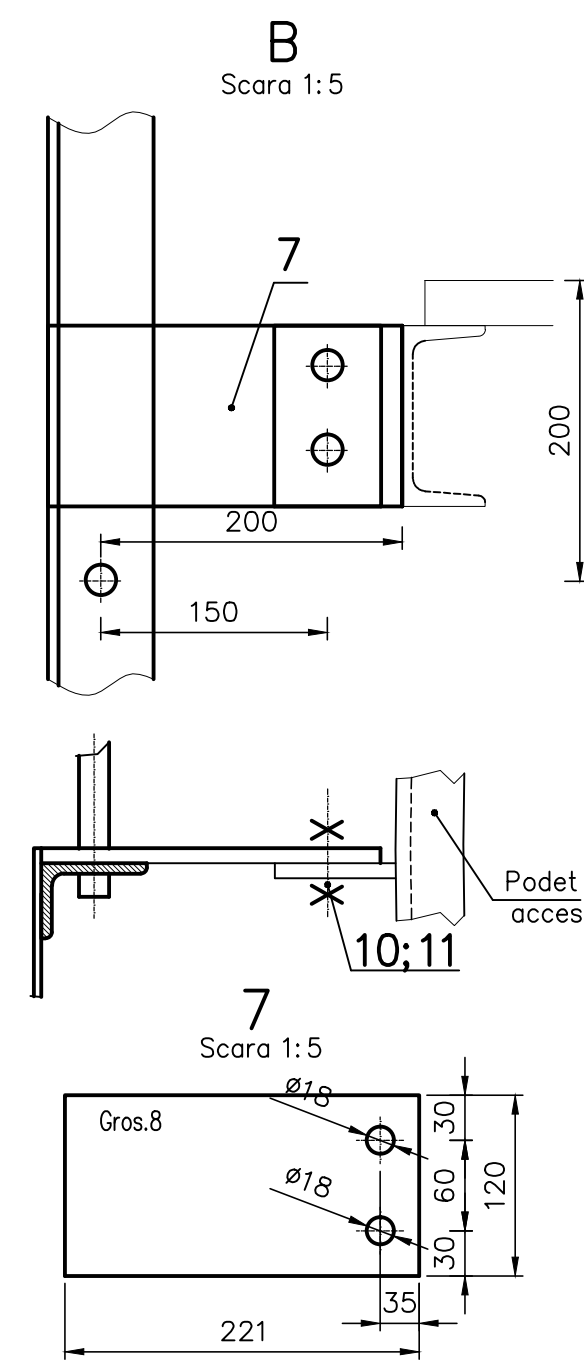
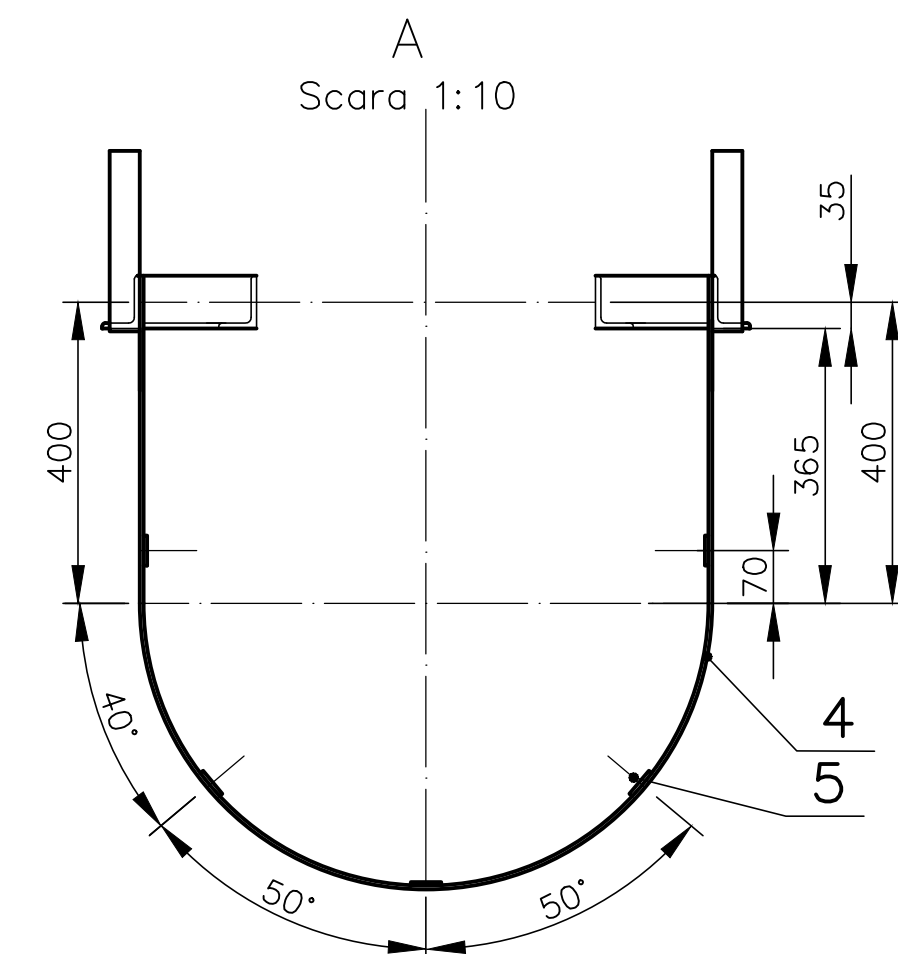
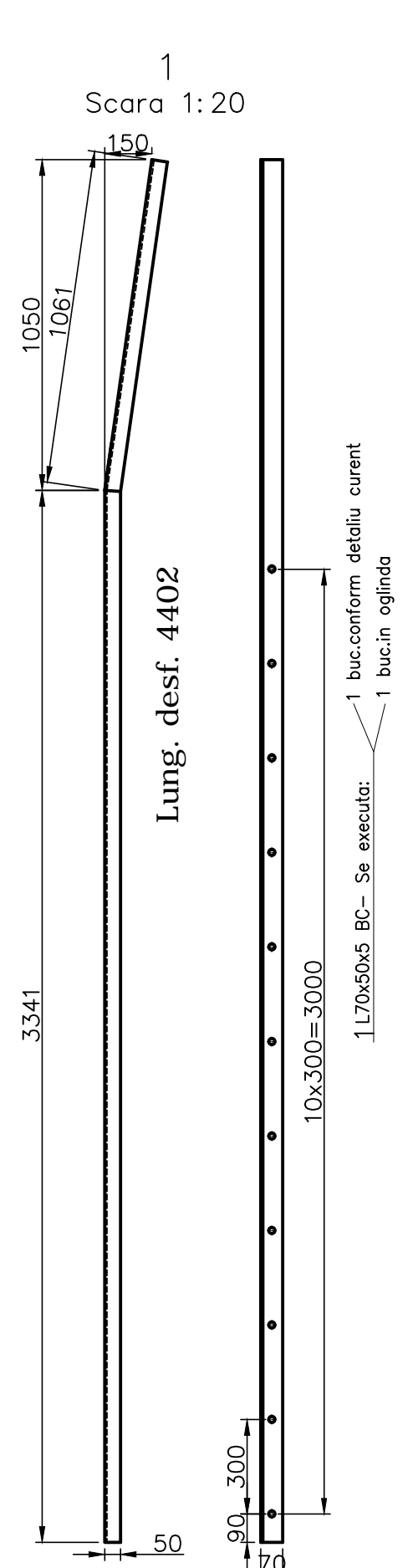
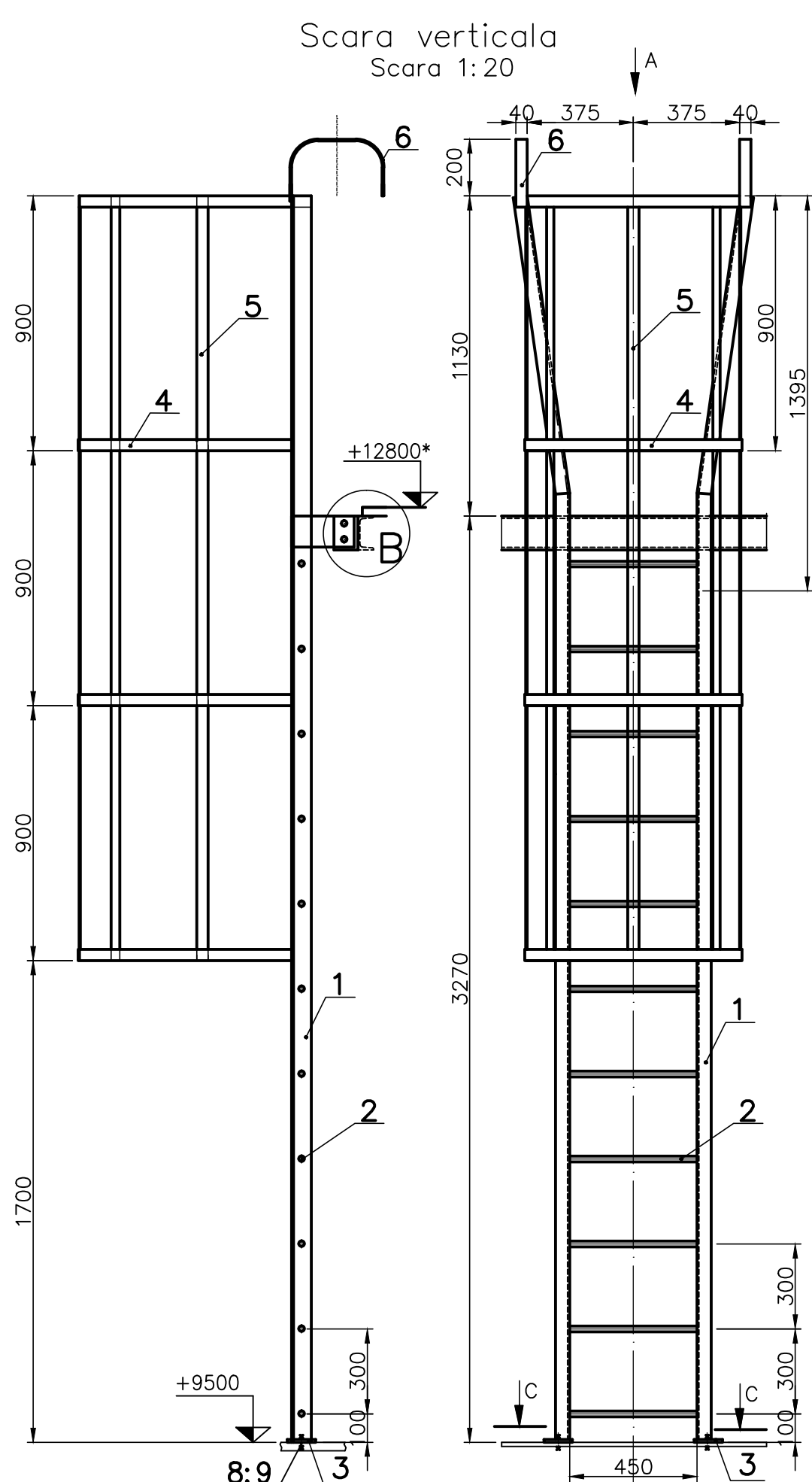


ACEST DOCUMENT ESTE PROPRIETATEA SOCIETATII ELIUS'92 S.R.L.-PLOESTI. IN CONSECINTA, FIRMA ARE DREPTUL EXCLUSIV DE FOLOSIRE A DESENULUI SAU DE OPERARE A EVENTUALELOR MODIFICARI DIN CAMPIUL ACESTUIA.



NOTA

- 1.Cotele notate cu (*) se vor definitiva la montaj in functie de caracteristicile constructive ale domului si platformei de pe dom.
2. Se vor executa 2 bucati.

11	Piulita M12	SREN ISO 4032:2002	2	gr.5	-	0.17
10	Surub M12	SREN ISO 4017:2002	2	gr.5.6	-	0.1
9	Piulita M16	SREN ISO 4032:2002	2	gr.5	-	0.033
8	Surub M16x40 sp	SREN ISO 4017:2002	2	gr.5.6	-	0.1
7	Element prindere	-	2	S235J2 SR EN 10025-2:2004	8x120x221	1.7
6	Mana curenta	-	2	S235J2 SR EN 10025-2:2004	40x4-698	0.8
5	Aparatoare verticala	-	5	S235J2 SR EN 10025-2:2004	40x4-2700	3.4
4	Aparatoare orizontala	-	4	S235J2 SR EN 10025-2:2004	40x4-2200	2.8
3	Placa	-	2	S235J2 SR EN 10025-2:2004	10x100x100	0.8
2	Treapta	-	11	S235J2 SR EN 10025-2:2004	ø20x480	1.2
1	Vang	-	2	S235J2 SR EN 10025-2:2004	L70x50x5 -4402	28.7
-	Electrozi	SREN 499/1997			-	3.2
Poz	Denumirea	Nr.desen sau STAS	Buc	Material	Observatii	Masa neto kg/buc.
3						
2						
1						
Rev.	Descriere	Data	Semnat	Rev.	Descriere	Data
Acest document este proprietatea S.C. ELLIS'92 S.R.L. si nu va fi comunicat fara autorizare						
Intocmit	Verificat	Aprobat	Beneficiar		Denumire proiect	
S.B.	N.R.	A.I.	CONPET SA		CONSTRUCTIE REZERVOARE PENTRU TITEI (V=2500 mc) STATIA DE POMPARE MORENI DAMBOVITA	
ELIUS'92		arhitectura proiectare inginerie consultanta tehnica		SCARA ACCES PE DOM		Nr.: A646U-06
						Scara:1: 10
						Index:A646U-BD/Rev.0
						Data: 06.2018
						Plansa:
						Masa:109.4 kg